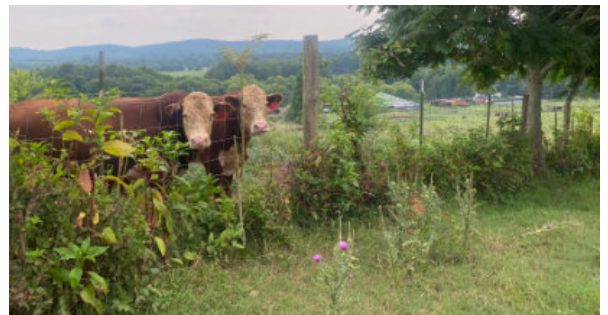
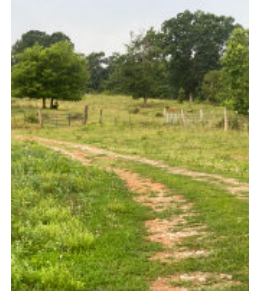


# Plein Air Painting

## MINI-WORKSHOP



*Adairsville Landscape* oil by Shane McDonald

Students will be introduced to concepts landscape artists employ when painting in oils live outdoors.

**9am - 1pm Saturday, May 4, 2023**

**Adairsville Cattle farm with barns, hills, and ponds**

We'll start at 9am, premix some colors for the palette and paint for 2-1/2 to 3-1/2 hours. Shane will demonstrate a small study to get everyone started. A short critique will take place at the end of the morning and afternoon paintings.

- Your easel (light-weight tripod easel, a half-size or full size French easel, or pochade box easel is recommended)
- Disposable paper palette pad (or what you already own and have successfully used before en plein air)
- Two or three brushes (long-handled, long-bristled recommended with brush heads ranging between 1/8-inch to 1-inch)
- Diamond-head metal palette knife
- Metal or solvent-safe plastic container for mineral spirits
- Rags or paper towels
- Two stretched canvases or painting panels of sizes 8x10 to 12 x 16 inches
- Oil Colors (a simplified palette—but feel free to bring more colors):
  - Titanium White
  - Cadmium Yellow Light
  - Viridian Green
  - Ultramarine Blue
  - Permanent Alizarine Crimson [or Quinacridone Red]



SHANE  
MCDONALD  
STUDIOS  
Artisan Resource Center  
585 Cobb Pkwy, Studio K2  
Marietta, GA 30060  
shane@shanemcdonaldstudios.com  
404-502-6829 (mobile)

**\$70 for 9 a.m. - 1 p.m.**

or

**\$70 for 2 p.m. - 6 p.m.**

or

**\$130 for the entire day (bring a sack lunch)**

**REGISTER ONLINE:**

[ShaneMcDonaldStudios.com/workshops.html](https://ShaneMcDonaldStudios.com/workshops.html)

**LOCATION:**

Approximately 1 hour drive north of Shane's studio.

Halls Station Road

Adairsville, GA

Address will be provided for enrollees.