



Sat. March 7, 2020

Learn more: ShaneMcDonaldStudios.com/workshops.html

Plein Air Workshop

in Rockmart, GA

with Shane McDonald

RECOMMENDED SUPPLIES:

- your easel (light-weight tripod easel, a half-size or full size French easel, or pochade box easel is recommended)
- a disposable paper palette pad (or what you already own and have successfully used before en plein air)
- two or three brushes (long-handled, long-bristled recommended with brush heads ranging between 1/8-inch to 1-inch)
- diamond-head metal palette knife
- metal or plastic container for solvent (or water for acrylics)
- oil paints (or acrylics if preferred)
- Colors (a simplified palette—but feel free to bring more colors):
Titanium White
Cadmium Yellow Light
Viridian Green
Ultramarine Blue
Permanent Alizarine Crimson [or Quinacridone Red]

Step-by-step guidance painting the landscape from life using oils or acrylics

MORNING: After a 30 minute demonstration and discussion, Shane will individually instruct students as they paint a scene around downtown Rockmart for 2+ hours.

AFTERNOON: After a noon lunch, the afternoon will be a repeat of the morning session—this time with a different view.

Shane will provide your painting substrate(s) and share his materials with anyone not able to get their own (see list below). Students already accustomed to plein air are welcome to bring the materials with which they are familiar. If you have questions about recommended art materials, more information is available [online](#) or you are welcome to contact Shane.

Full day 6 hours painting
with one-hour lunch
(9 a.m. - 4 p.m.)
\$100

Half-day 3 hours painting
(9 a.m. - noon or 1 p.m. - 4 p.m.)
\$70

Limited to 9 people.



SHANE MCDONALD
STUDIOS

shane@shanemcdonaldstudios.com
(404) 502-6829





Shane McDonald: *The Big Chicken*,
9 x 12 in. oil on canvas, 2012



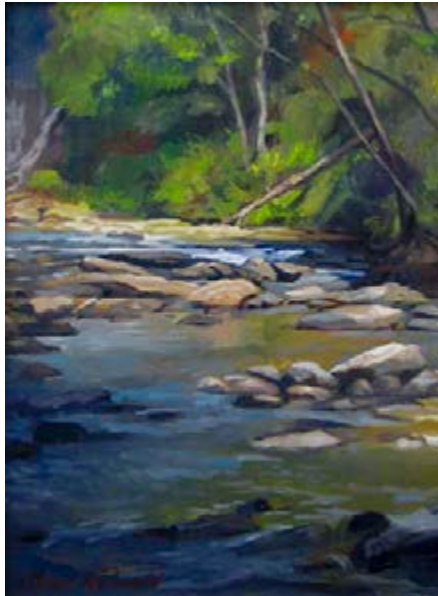
Shane McDonald:
Iris Align for the Morning Sun,
14 x 11 in. oil on canvas, 2010



Shane McDonald: *Jeckyl Island Club*,
16 X 12 in. oil on canvas, 2009



Shane McDonald:
Cresthill Garden, 12 x 9 in.
oil on canvas, 2010



Shane McDonald: *Vickory Creek*,
14 X 11 in. oil on canvas, 2009



Shane McDonald: *Cana Lili*, 16 x 20 in.
oil on canvas, 2009

www.shanemcdonaldstudios.com

MEET FOR THE WORKSHOP

9 a.m. or 1 p.m. Saturday, March 7, 2020

100 E Church St, Rockmart, GA 30153

offered in conjunction with the
Rockmart Cultural Arts Center
(770) 684-2707